

May 2015 Coccoloba Jam

[Campaign Preview](#)

[HTML Source](#)

[Plain-Text Email](#)

[Details](#)

Yay! It's the Coccoloba Jam!!

[View this email in your browser](#)

Coccoloba Chapter of the Florida Native Plant Society
Next Meeting: Annual Summer Picnic at Estero Community Park.
May 16th, 11:00 am at the pavilion
Visit our Website: <http://www.fnpscoccoloba.org/>
Like us on Face Book: Coccoloba Chapter, Florida Native Plant Society



Inside May 2015

- Annual Picnic
- Follow Coccoloba happenings on the web, Facebook, & Twitter
- Manatee Park Propagation Project
- CREW Trust Trip
- Summer Meetings
- Meet the Experts



Team Coccoloba getting the job done last summer at Estero Community Park.

Coccoloba Chapter

- meet the enemy
- Lifecycle of a plastic bottle
- Minutes of the General Membership Meeting

Follow Coccoloba happenings on the web, Facebook, & Twitter!

Check out Coccoloba's website for up-to-date information on chapter events

(www.fnpscoccoloba.org).

Like us on Facebook (type in Coccoloba Chapter, Florida Native Plant Society) and follow us on Twitter (@FNPSoccoloba) to join the conversation!

Annual Picnic

May 16th 11:00 am Estero Community Park

Join us for our annual picnic at Estero Community Park where we planted a few truckloads of native plants last summer.

We'll stroll around evaluating and enjoying the plantings before we congregate in the small pavilion west of the hill to break bread together. All are welcome. Feel free to bring a guest.

Dogs must be on a leash, except in the dog park. Estero Community Park is located at 9200 Corkscrew Palms Blvd, Estero, FL 33928

Reminder, we will not be meeting at Page Field this month.





Manatee Propagation Project

On March 25 - 27th Cocoloba Chapter member Karen Maxwell taught a three day native plant propagation workshop at Manatee Park. Twenty-nine volunteers participated in the program which was made possible by Manatee Park. The park was happy to host the event and offered their native plant inventory as propagation stock. They also purchased a misting system for the renovated shade house. The Cocoloba Chapter provided funding for the supplies. Two volunteers, Fred Rubino and Dave of Manatee Park did an outstanding job of rehabilitating the shade house for the project. A number of volunteers have committed to monitoring the plants over the summer. The plants will be sold at the Chapter's native plant sale next fall. Congratulations to everyone who participates in this worthwhile project!





CREW Land and Water Trust Field Trip

Several members took advantage of the latest field trip opportunity with Roger Hammer. The trails were well groomed and the plants and wildlife were plentiful. There were even some baby alligators! Roger was a fun and knowledgeable tour guide. He was telling stories and identifying plants all the way. What a great time!

Summer Meetings!

In the past Coccoloba has not held summer meetings, but, this year is going to be different! There are going to be some great opportunities for members to get more information from one of our best guest speakers, Dr. Jim Burch. These expanded educational lectures will cover native bromeliads, orchids, other epiphytes and some unpleasant exotics that are encountered here in SWFLA. The lectures will last about an hour.

All sessions are open to the public and are held at:

Page Field Base Operations

5200 Captain Channing Page Dr.

Fort Myers, FL 33907

(Directions: Take 41 to Fowler. Turn east on Fowler and your first right to Page Field.)

ALL ARE WELCOME! These events are open to anybody interested in learning more about native plants and native plant communities.

Dr. Jim Burch talks about bromeliads, orchids and other epiphytes in south Florida.

Jun 9th, 7:00 pm,

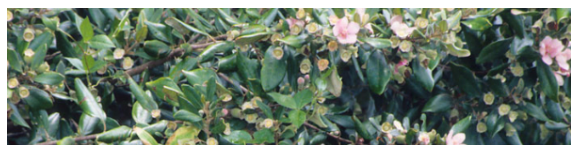
Page Field Base Operations, Fort Myers

Schinus on my Sweet Shaggytuft and My Other Plants, Too!

Jul 14, 7:00 pm

Page Field Base Operations, Fort Myers

Special thanks to our generous sponsor, CHNEP, for enabling us to expand our sessions.





Meet the Enemy

Downy Rose Myrtle *Rhodomyrtus tomentosa*

This Asian invasive exotic is threatening to become the new “Brazilian Pepper.” Introduced as a landscaping plant, it is currently spreading, unchecked, through the native pinelands of Florida. The fruit of this plant is edible and it is freeze and salt tolerant. It also has adapted to fire conditions and resprouts after a burn.

Downy rose myrtle is an evergreen shrub that usually grows to 6 feet tall, but occasionally to 12 feet tall. It can grow into large monocultures. Its leaves are opposite, simple, entire, elliptic-oval, to 3 in. long. The leaves are glossy green above and densely soft-hairy below, with 3 main veins from blade base. Downy rose myrtle flowers profusely in the spring. The flowers are rose-pink, to 1 in. across, in one-to few-flowered clusters at the leaf axils. The fruit is a bluish-purple globose berry about 1/2 in. across that looks similar to blueberry but more oblong.

Not for Planting

Listed as a category 1 invasive weed by the Florida Exotic Pest Plant Council

A major weed in Charlotte County and as far north as Pasco County.

A growing problem in Lee and Collier Counties.

A principal weed in Hawaii and Malaysia.

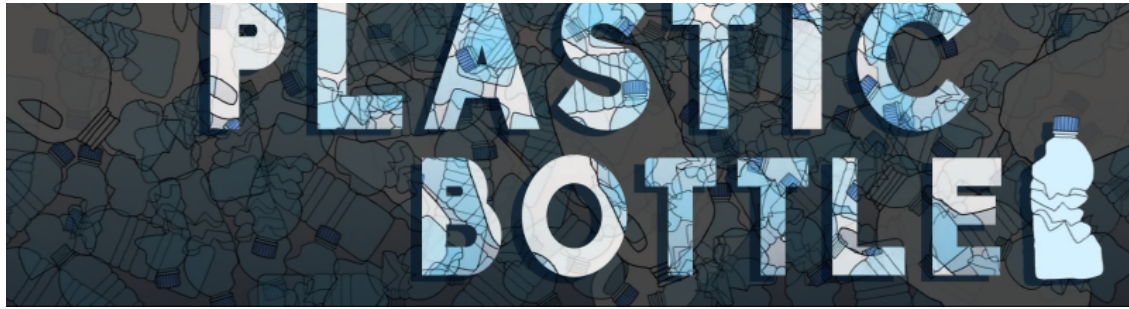
For more information on this new threat to our environment visit the following sites:

http://lee.ifas.ufl.edu/Hort/Videos_and_Powerpoints/Downy_Rose_Myrtle.pdf

<http://plants.ifas.ufl.edu/node/364>

Special thanks to Stephen H. Brown Lee County Extension Southwest Florida for his plant files memo.





What really happens to the plastic you throw away?

By Emma Bryce

Animation by Sharon Colman

We've all been told that we should recycle plastic bottles and containers. But what actually happens to the plastic if we just throw it away? Emma Bryce traces the life cycles of three different plastic bottles, shedding light on the dangers these disposables present to our world.

[View full lesson »](#)

<http://ed.ted.com/lessons/what-really-happens-to-the-plastic-you-throw-away-emma-bryce#review>

Story Courtesy of TEDEd Copyright © 2015 TED-Ed, All rights reserved.
to receive more lessons worth sharing subscribe at:ed.ted.com

Minutes of the General Membership Meeting of the Florida Native Plant Society, Coccoloba Chapter

Tuesday, April 14, 2015, 7:00 pm

By Ben Johnson, Chapter Secretary

Attendance: 14

Pat Meyer handed out free raffle tickets for attending members to win door prizes. Raffle tickets

Pat Moyer handed out five raffle tickets for attending members to win door prizes. Raffle tickets for door prizes will be continued at upcoming chapter meetings.

Martha Grattan called meeting to order and introduced guest speaker Dr. Charles Gunnels, Associate Professor of Animal Behavior at FGCU (Florida Gulf Coast University). Dr. Gunnels gave a presentation on Sabal Palms and their role in supporting urban wildlife. He provided data on his research which included random samplings of insects and animals found in sabal palms within both wild and urban landscape areas.

After the speaker, the door prize winner was announced. Congratulations Patty Wettstein.

No treasury report given for this month.

Pat Moyer announced volunteers were needed for a native plant sale at Rotary Park from 9 a.m. to 1 p.m. on Saturday April 18th.

New members were announced. Welcome Susan and Glen Cummings, Deloris Donnelly, and Bob Soter.

Upcoming events:

FNPS CREW Marsh walk with Roger Hammer
Saturday, April 18th 1 p.m. to 4 p.m. Estero, FL

FNPS 2015 conference, "Born to Burn"
May 28 - 31, Tallahassee, FL

Martha recommended reserving rooms early for the conference. Conference rate is \$94 per night. Call 877-GO-ALOFT and ask for the conference rate.

End of season picnic TBD.

Discussed providing Coccoloba membership directory to members.

Dick Workman motioned to adjourn meeting. Lucy Breitung seconded the motion. Motion passed.

\$43 raised from plant auction.

Comments about the newsletter? Not displaying correctly? Wrong email address? Please let Isabella Peedle (newsletter editor) know at: marthagrattan@yahoo.com

Copyright © 2014 Florida Native Plant Society, Coccoloba Chapter, All rights reserved.
You are receiving this email because you are a member of the Coccoloba chapter of the Florida

Native Plant Society, or you signed on to our email list at an event or through our website.

Our mailing address is:
Florida Native Plant Society, Coccoloba Chapter
P.O. Box 61432
Fort Myers, FL 33906-1432

[Add us to your address book](#)

[unsubscribe from this list](#) [update subscription preferences](#)



This email was sent to << Test Email Address >>

[why did I get this?](#) [unsubscribe from this list](#) [update subscription preferences](#)

Florida Native Plant Society, Coccoloba Chapter · P.O. Box 61432 · Fort Myers, FL 33906-1432 · USA

